



**ATIKA®**

## Concrete mixer **Focus 185**

The powerful professional mixer for the professional construction site.

With high-performance electric motors for perfect mixing results.

Easy and safe to use.



# Concrete mixer **Focus 185**

A high performance quality mixer for the professional construction sites.

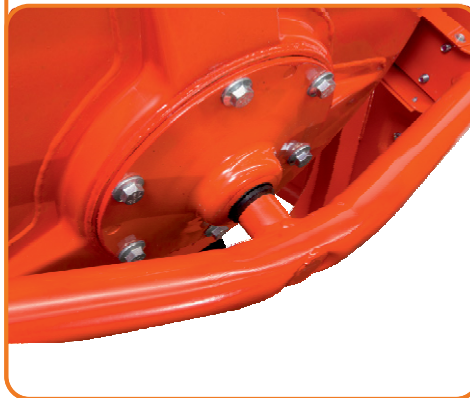
- With high-performance - A.C. single-phase and 3-phase motors are available for selection;
- motors with thermal overload protection and restart protection in case of power failure;
- particularly robust construction: solid, torsion-resistant frame reinforced with gusset plates;
- specially designed agitator for optimum mixing quality;
- large-volume and easy-to-fill stirring drum;
- well equipped for long-term use, because
  - the adjustment-free drive belt,
  - the segmented gear rim and
  - the quality ball bearings on the drum and drive shaft
 guarantee smooth and continuous power transmission;
- + the machine is equipped with
  - a large hand wheel,
  - a disc brake,
  - foot control and
  - a pivoting device with a 1:4 reduction ratio for better and safer operation;
- + the mixer is also easy to manoeuvre thanks to the stable chassis with solid rubber wheels.



Swivel device with reduction 1:4



strong drum bearing



large handwheel with disc and foot pedal operation




## Concrete mixer

## Focus 185

Order-no	321650	321660
Electric motor	230 V~ 50 Hz	400 V3~ 50 Hz
Motor type	A.C. single-phase	3-phase
Input power P <sub>i</sub> (S1)	900 W	750 W
Rotation speed n <sub>0</sub>	2800 min <sup>-1</sup>	2800 min <sup>-1</sup>
Drum capacity	185 l (± 7%)	
Nominal capacity	135 l (± 7%)	
Protection class	II	
Protection degree	IP 45	
Guaranteed sound power level L <sub>WA</sub>	84 dB(A)	
Sound pressure level L <sub>PA</sub>	63 dB(A)	
Solid rubber wheel	Ø 400 mm	
Brake and foot operation	✓	
Thermal motor protection	✓	
Restart protection	✓	
Dimensions (length x width x high)	approx. 1380 x 912 x 1400 mm	
Weight	approx. 90 kg	

## Logistic data

 1400 x 900 x 1600 mm

 approx. 90 kg

article-no.: 321650



4 1004265 010367

artikel-no.: 321660



4 1004265 010466

Technical modifications reserved.



ALTRAD Equipment Germany GmbH  
 Josef-Drexler-Str. 8, 89331 Burgau, Germany  
 Phone.: +49 (0) 82 22 / 4130-0 - Fax: +49 (0) 82 22 / 4130-24 - E-mail: info@lescha-atika.de  
 Internet: [www.lescha-atika.de](http://www.lescha-atika.de)